

Warsow Multiplayer Guide

Prasannah ([Inverse Karma](#)) – exchequer598@gmail.com

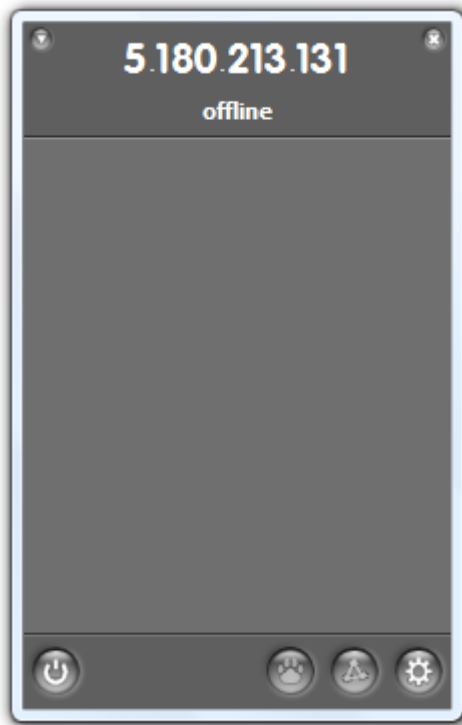
This guide is intended for my friends with whom I play **Warsow** (multiplayer frag-fest) over the internet. However, it can be used as a starting point for gaming novices to help in setting up/participating in similar closed-group multiplayer gaming (any game, actually!)

What You Need

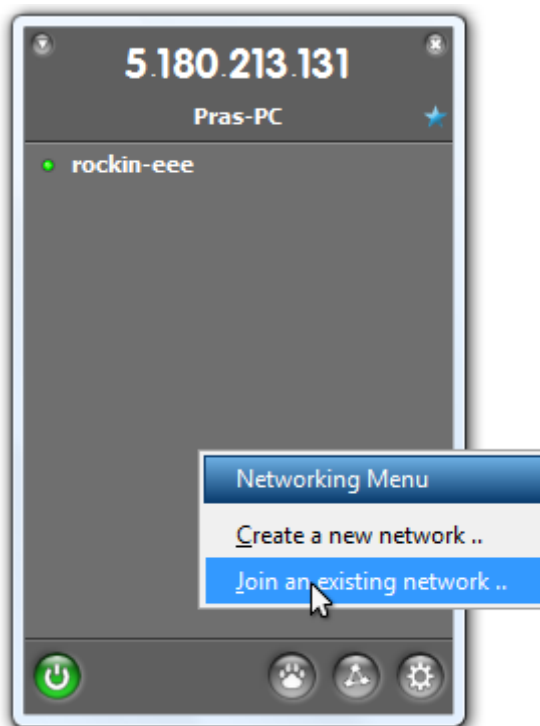
Download **Warsow** (the latest version at the time of making this guide is v0.42) from <http://www.warsow.net/?page=download>. After having installed the game, get **Hamachi** from http://www.filehippo.com/download_hamachi/. **Hamachi** is a small utility used to setup a VPN (Virtual Private Network) between your friends' computers so that you can play the game like you're on a LAN. This makes the networking process much easier on broadband connections.

Setting Up Hamachi

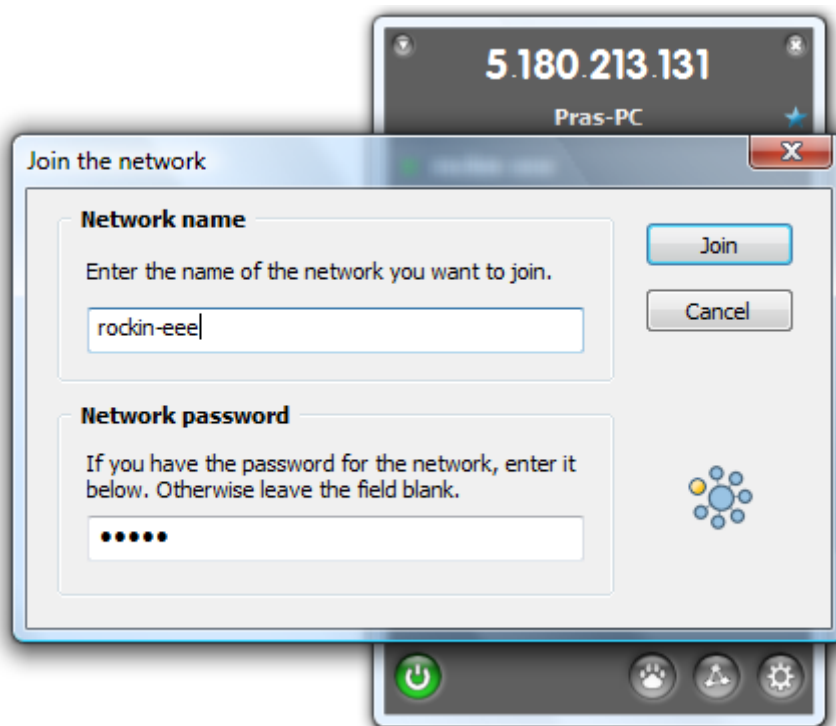
Install **Hamachi** and then open it. You'll see a window similar to this. The unique IP address on top will differ on your machine.



Click on the Power icon on the bottom-right corner of the **Hamachi** window to connect to the network and go online. Once online, the icon turns from **gray** to **green**. Then, click on the triangular icon on the right-hand side of the window and select *Join an existing network*.



You will be prompted for the name and the password (if required) of the network you wish to join. Enter **rockin-eee** in the Network Name field. Enter the password, which you would already know it if you're supposed to know it 😊



Once connected, you'll be shown a list of other people on the network. You could also send messages to them (chat) by right-clicking on the user's name and selecting the option for it. Do **NOT** close the window now.

Joining a Multiplayer Game

With **Hamachi** running, start **Warsow**. Now once on the main menu, click on *Join game*. (If you're participating in a game hosted by someone else – probably I'll be running the server). Then, in the top right corner of your screen, you'll see a *Search* option that reads *Global* by default. Keep clicking on it until it changes to *Local*. Then click on the big *Search!* button on the bottom of your screen. The server (run by me) should show up on your list. Double-click to join the game. Happy fragging!